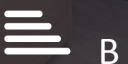




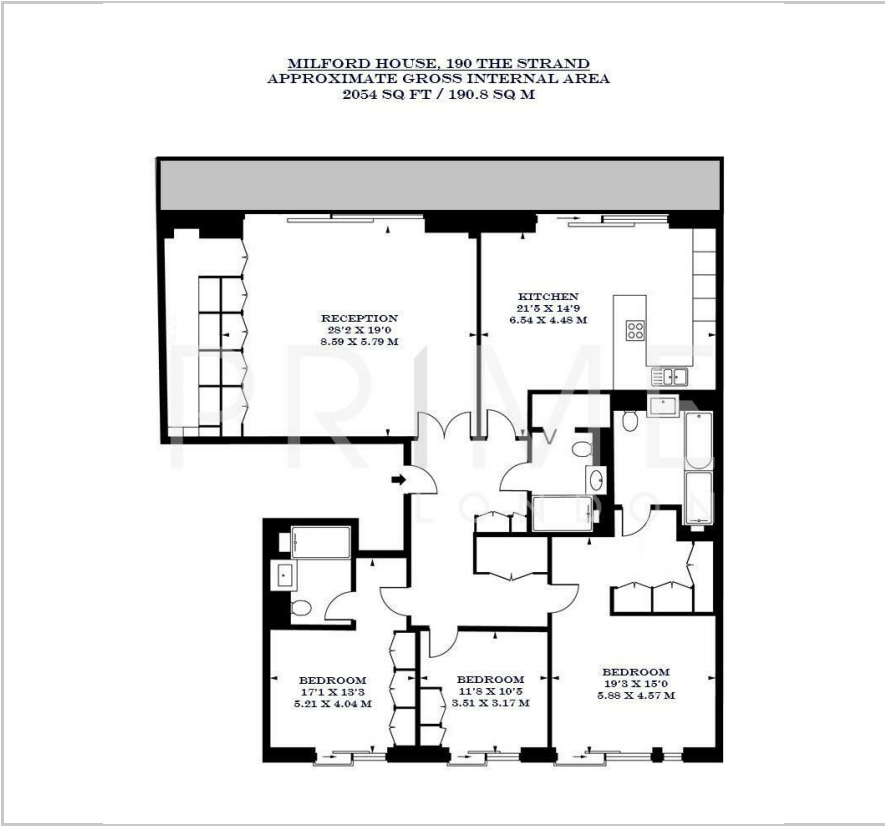
Milford House

190 Strand, WC2R 1AB

Asking Price £3,800,000



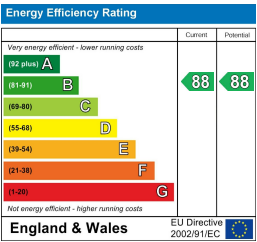
Floor Plan



Area Map



Energy Efficiency Graph



Viewing

By appointment. Contact us on 0207 052 1075 if you wish to arrange a viewing appointment for this property, or require further information.

- Exceptional three bedroom ■ 2,054 sq ft (190.8 sq m) apartment
- Balcony with views over ■ Private gym, pool, spa and London cinema
- Underground parking ■ 24-hour concierge

This exceptional three bedroom apartment, located in the prestigious 190 The Strand development, is available for chain free sale through Prime London.

Totalling 2,054 sq ft (190.8 sq m), the property boasts a generous open plan kitchen and large separate reception room, both with access to the balcony which spans over the full length of the apartment. There are three generously sized bedrooms, with built in storage space. The master bedroom benefits from an ensuite and walk in wardrobe area. This apartment also has a secure underground parking space.

The property is situated within the 190 Strand development, which offers its residents a private gym, spa, pool, cinema and 24 hour concierge.

Positioned in the prestigious area of Covent Garden, the apartment has easy access to some of London's best restaurants, cafes and boutiques.

For transport, Milford House is just a short walk away from Temple, Embankment and Charring Cross, which offer excellent transport links across the city.



These particulars, whilst believed to be accurate are set out as a general outline only for guidance and do not constitute any part of an offer or contract. Intending purchasers should not rely on them as statements of representation of fact, but must satisfy themselves by inspection or otherwise as to their accuracy. No person in this firm's employment has the authority to make or give any representation or warranty in respect of the property.